



Quick Start Guide Logitech Rally

Turn on media technic

Start the media technic following the instructions for your room's technic.



PC in the lecture hall

Turn on the PC and, if there, Smart Podium.

Mouse and keyboard are located under the lecture desk.

Preparation Logitech Rally

Turn on the power outlet into which the Logitech Rally system is plugged in.

If the camera makes rattling noises at startup, press 1 or 2 on the remote control (see below).

Distribute the microphones on the room's tables. Take care that all cables are plugged in, indicated with the lights turning on.

The lights indicate if the microphones are muted or unmuted. Participants can un/mute them by pressing the button in their middle as well.



Projection (dependent on the room's media technic)

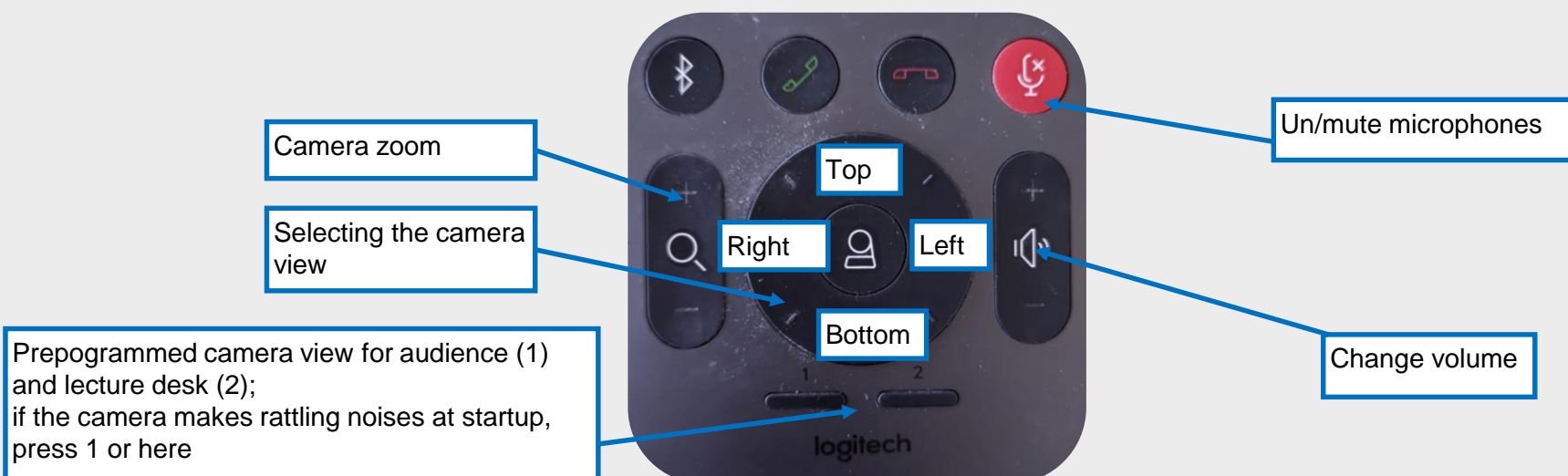
Select which screen to be displayed onto which screen.



Starting a web conference

Logitech Rally only works with the PC built into the lecture hall. Start a web conference with a provider of your choice. When selecting microphones and camera allow for access and then select "Freisprechtelefon mit Echoausschaltung" or „Logi Rally Audio/Kamera“ for microphone, camera, and speakers.

Test if you hear sound over the Rally system's speakers. If necessary change speaker and/or microphone settings on the lecture hall's PC or the video conference software you use.



Turn off media technic!

To do this, press the „**Ende**“ button on the touchpanel to switch of the beamer before you leave the room.

Also turn of the Rally's power outlet.

Please do not change anything in the wiring!

Please report malfunctions to the telephone number 0551 39-**1171**!



<https://s.gwdg.de/b9IL2H>



Für detaillierte Anleitungen und deutsche Version QR-Code scannen
For English version please check the QR-Code